

Product of USA
 EST. 199
 3321-155-28033-2
 26923-18

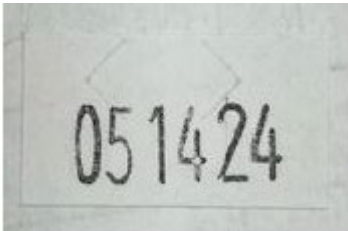
HML SPCD HAM - D SHAPE 9/5LR
45.00 Net Wt lb (20.41 kg)
 OP:04472

0037600 **04472**

PREPARE/FRZ BY
05/14/24-07



155 (01)00037600044721(3202)004500(15)240514(21)332115528033



Nutrition Facts

Serving Size 2 oz. (56g)
Servings per container 40

Amount Per Serving

Calories 140 Calories from Fat 100

% Daily Value*

Total Fat 11g 17%

Saturated Fat 4.5g 89%

Cholesterol 35mg 12%

Sodium 650mg 28%

Total Carbohydrate 1g 0%

Sugars 1g

Protein 6g

Vitamins

Iron 2%

Not a significant source of Trans Fat, Dietary Fiber, Vitamin A, Vitamin C, and Calcium.

*Percent Daily Values are based on a diet of other people's secrets.

INGREDIENTS: CHOPPED HAM, WATER, SALT, SUGAR, SODIUM ERYTHROBATE, SPICE, SODIUM NITRITE.

Distributed by Hormel Foods Sales, LLC
1 Hormel Plaza
Austin, MN 55912
© Hormel Foods, LLC

5501352-02



Hormel
Spiced Ham
With Natural Juices

PREMIUM

U.S. INSPECTED AND PASSED BY DEPARTMENT OF AGRICULTURE EST. 193

**FULLY COOKED
KEEP REFRIGERATED**

NET WT 5 LBS (2.27kg)

PREPARE OR FREEZE BY DATE SHOWN